

## Product 215503



**215503 MoveClip** MultiMoveClip: Complete set. Contains 1 MultiMoveClip, 2 adapter plates, 4 screws.

MultiMoveClip is for you who easily want to switch between different device holders on the same ProClip. Perfect if you have different cell phones but drive the same car, or if you want to place your GPS where the cell phone usually sits. You attach the MultiMoveClip onto your ProClip in your car and it is then ready to use with your device holders of choice. Your device holders are fitted just as secure as if they were screwed directly onto the ProClip.

MultiMoveClip fits with all Brodit's holders with tilt swivel. There are two sizes of tilt swivels and to be able to fit even the smaller size two adapter plates are enclosed with the delivery. Combined with item no 215504 MultiMoveClip also fits holders without tilt swivel.

MultiMoveClip film!

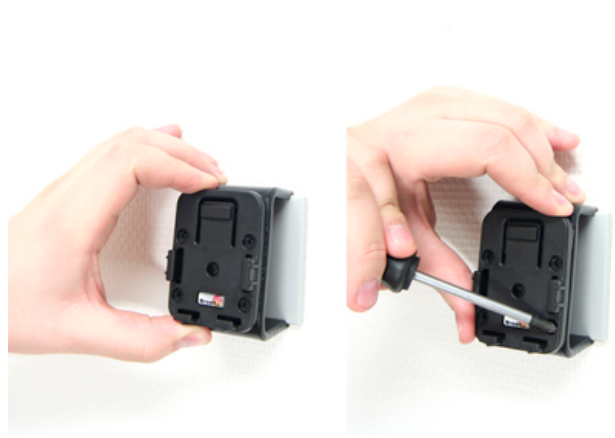
EAN: 7320282155032

## INSTALLATION INSTRUCTIONS

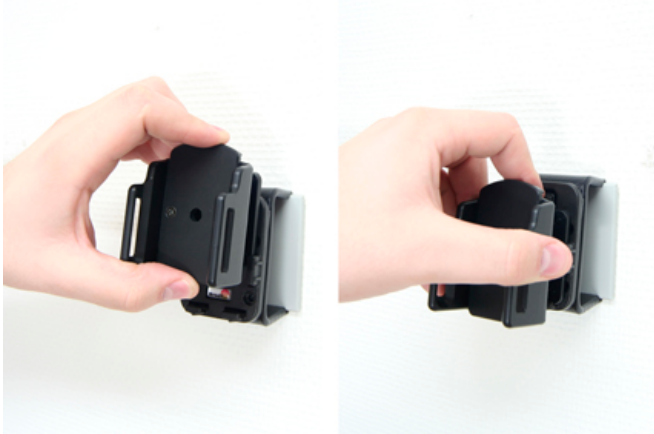
1.



2.



3.



4.



Please read all of the instructions and look at the pictures before attaching the holder. There are two tilt swivel sizes. The larger tilt swivel will fit directly into the MultiMoveClip. In order for the smaller tilt swivel to fit into the MultiMoveClip you need to use the enclosed adapter plate. Compare the tilt swivel on your holder with the drawn picture to determine which size tilt swivel you have. To make sure, you can always place your holder into the MultiMoveClip without using an adapter plate; if the fit is loose or unstable, you will need to use the adapter plate.

1. If you have the smaller tilt swivel: Press the adapter plate into place onto the tilt swivel.

2. Place the MultiMoveClip onto the desired position and screw it into place with the enclosed screws.

3. To place the holder into the MultiMoveClip: Slide the holder downward into place from above.

To remove the holder from the MultiMoveClip: Press the latch on the upper part of the MultiMoveClip forward. In the same time push the holder upward and out of the MultiMoveClip.

4. MultiMoveClip is in place. You can now switch holders easily.